



St. Mary's  
Food Bank®

# Annual Report 2024-2025





## MISSION STATEMENT

Bridging the gap for Arizona communities  
with nourishment for today and  
hope for tomorrow.





# How we provide hunger relief in Arizona

FY 2024 - 2025 | ENDED 06/30/25

## OUR FLEET



Trucks and Vehicles

**1.8M**  
Miles Driven

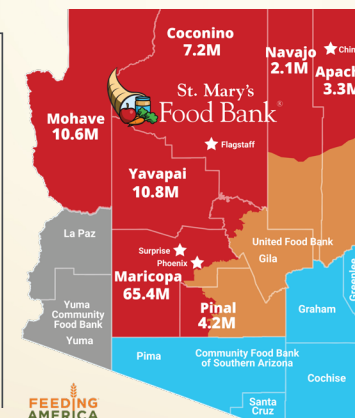


## VOLUNTEERS



**189K**  
Volunteer Hours  
**80K**  
Volunteer Visits

## NUMBER OF MEALS BY COUNTY



## Where we get food:

### TOP GROCERY PARTNERS:

Walmart	Fry's	Target
Pepsi	Bimbo	Amazon
HelloFresh	Niagara	
Martori Farms	Shamrock	

**36**  
MILLION POUNDS

### GROCERY RESCUE

**26**  
MILLION POUNDS

### FOOD PRODUCERS

**23**  
TOTAL

### PRODUCE FARMERS

**30**  
MILLION POUNDS

### USDA

**15**  
MILLION POUNDS

### PURCHASED FOOD

**1**  
MILLION POUNDS

### FOOD DRIVES

## How we give food:

### DISTRIBUTION



**107M**  
Total Meals

**2.4M**  
Visits from our  
Neighbors in Need

**707**  
Agency  
Partners

**50M**  
Pounds of  
Produce

### CHILD NUTRITION PROGRAMS

**630K**  
Kids Cafe® after-  
school and summer  
meals served

**301**  
Kids Cafe® after-  
school and summer  
meals sites

**112K**  
Family weekend  
backpacks of food  
given to kids

### SKILLS CENTER PROGRAMS

**255**  
Students Graduated  
from our Community  
Kitchen and LIFT  
workforce development  
programs.



**248**  
Full-time  
Employees

### TRIBAL PARTNERSHIPS



**9.2**  
Million Meals





# Connect

## Our Locations

### PHOENIX

**St. Mary's Food Bank –  
Neighborhood Food Center**  
3131 W. Thomas Road  
Phoenix, AZ 85017

**St. Mary's Food Bank –  
Community Resource Center**  
3003 W. Thomas Road  
Phoenix, AZ 85017

**St. Mary's Food Bank –  
Administration and Warehouse**  
2831 N. 31st Avenue  
Phoenix, AZ 85009

**St. Mary's Food Bank –  
Volunteer Center**  
2804 N 29th Ave  
Phoenix, AZ 85009

**StMarysFoodBank.org**  
**602-242-FOOD (3663)**

**Follow us on social**  
**@StMarysFoodBank**



### SURPRISE

**St. Mary's Food Bank –  
Neighborhood Food Center**  
13050 W. Elm Street  
Surprise, AZ 85378

### FLAGSTAFF

**St. Mary's Food Bank –  
Administration Office Only**  
5200 E. Cortland Blvd Suite A15  
Flagstaff, AZ 86004

### CHINLE

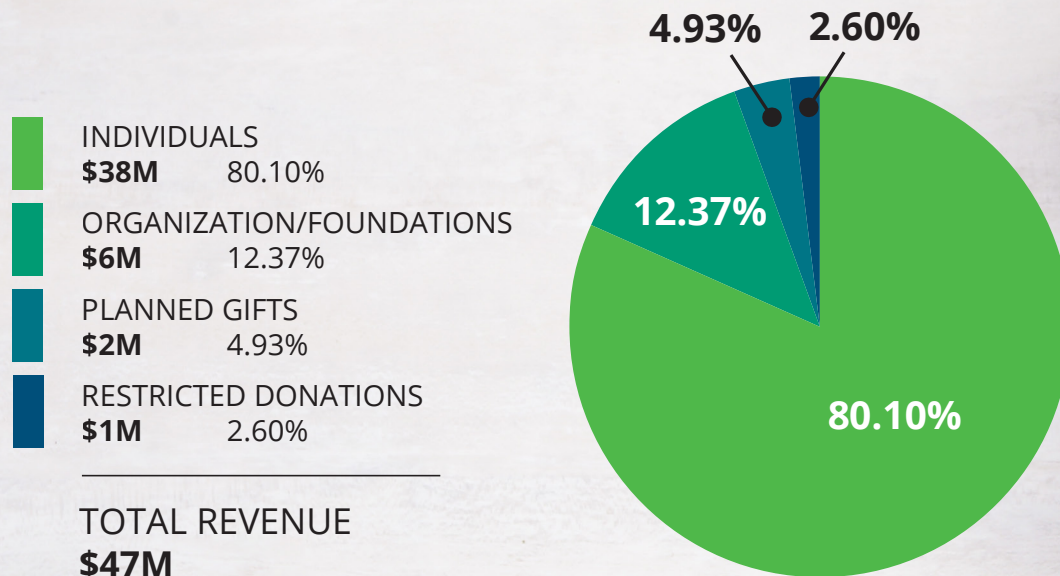
**St. Mary's Food Bank –  
Neighborhood Food Center**  
North IR7  
Chinle, AZ 86503





# Contributed Income

## 2024-2025







# Thank you Donors!

The staff and leadership of St. Mary's are so grateful for your kind heart and generous nature. Your financial support is key to our mission to help our neighbors struggling with hunger.

This past year, so many Arizonans needed our help. The number of families and seniors coming to us for help increased dramatically over the previous year. A large portion of those neighbors needed our help for the first time in their lives...some used to be financial supporters.

You have made an enormous difference in their lives. Knowing that you care is a great relief to the mother worrying about feeding her children, the father whose wages don't cover increased food prices, the senior citizen living on a fixed income as prices soar.

Thank you for helping us to help them. We hope you understand the significant impact your support of St. Mary's has had on our fellow Arizonans and our community.

*Thank You.*



# Feeding kids with Child Nutrition Programs



## SCHOOL PANTRY

With the cooperation of five schools, St. Mary's has established grocery-store-style pantries where parents and children can 'shop'. This shopping model provides a selection of various food items that students and parents can choose to take home to create meals for their families. This past year, 12,636 students took advantage of this wonderful opportunity.



## FAMILY WEEKEND BACKPACK

Backpacks full of enough non-perishable food to feed a family for two days are available to students through schools and after-school programs in areas of extreme poverty.

St. Mary's volunteers packed more than 112,977 backpacks this past year. Each backpack included a dozen nutritious and easily prepared food items such as peanut butter, canned meat, canned fruits and vegetables. These backpacks helped the students and their families create meals when school meals are not available.



## Kids Cafe

Provides meals to school-age children participating in after-school or summer programs.

During the school year

**2,700**  
MEALS PER DAY

**120+**  
LOCATIONS

During the Summer

**5,371**  
MEALS PER DAY

**4,871**  
GREATER PHOENIX

**500**  
RURAL & TRIBAL AREAS



# Everyone Deserves a Chance at Work



Our Skills Center consists of two programs designed to equip adults facing barriers to employment with the skills and support they need for a better life. In addition to job training, the curriculum includes essential life skills such as budgeting and anger management, helping students rebuild confidence and self-esteem. The programs also provide job placement assistance and ongoing support to ensure long-term success.

This year, we proudly served 530 individuals, enrolling 332 and graduating 255. While we celebrate the 255 students who completed the program and entered the workforce, it's equally meaningful to acknowledge the impact of reaching over 500 individuals — each taking steps toward stability and opportunity.



## COMMUNITY KITCHEN

A nine-week culinary training program covering all aspects of the restaurant industry is available for adults with barriers to employment. From cooking and baking to creating menus and serving, students are able to learn hands-on the skills necessary for long-term employment in the food service.



## LOGISTICS. INVENTORY. FORKLIFT. TRAINING.

This is a six-week course providing specialized training in warehouse, inventory, and logistics operations. Students are taught how to operate forklifts and pallet jacks to help ensure placement in this stable and increasing industry.





# Food Box Programs



## THE EMERGENCY FOOD ASSISTANCE PROGRAM (TEFAP) FOOD BOXES

Our commitment to providing valuable and sustainable nutrition to our community is seen in the emergency food box we have created utilizing the government program, The Emergency Food Assistance Program. Any neighbor who comes to a St. Mary's Food Bank distribution receives a box of shelf-stable, high-quality food that lays a foundation of nutrition for our neighbors. Proteins, vegetables, and other pantry staples are at the core of this box and are our first step in filling the shelves of our neighbors' kitchens. All of our non-perishable boxes are supplemented with donated/ purchased food such as fresh fruits and vegetables, dairy, meat, snacks and beverages.



## SENIOR BOX: COMMODITY SUPPLEMENTAL FOOD PROGRAM (CSFP) FOOD BOXES

We are always working to provide the best possible food for our neighbors, especially our neighbors with dietary limitations and restrictions. Our Senior Boxes help to meet the needs of an aging population by providing items catered to this demographic. This food box takes our offerings one step further to ensure that nutrition and usability are prioritized in meeting the dietary needs of our neighbors.

## TRIBAL FOOD BOXES

Providing culturally relevant and nutritionally dense food not only lifts up our neighbors, but grows and sustains our local food systems. We buy locally sourced food from distributors to increase neighbor access to traditional foods and support local tribal economies. Our indigenous neighbors are working hard to bring back to their communities food access and resources that were historically abundant. It is our honor to support them in their work to restore cultural traditions and local food systems with the distribution of our Tribal Food Box to more than 3,000 indigenous households every month.



# Home Delivery & Mobile Distribution

## HOME DELIVERY

At St. Mary's, we understand the challenges faced by individuals dealing with food insecurity, especially those who are unable to visit our centers or partner agencies. The Home Delivery Program supports neighbors who face difficulty accessing food due to disabilities, illness, transportation challenges, and other factors. The program utilizes both internal staff drivers and partnered third-party delivery services to ensure that food boxes reach those in need. Thanks to our generous donors, we continue to expand our delivery territory, reaching even more people in need. This fiscal year, we delivered food to more than 75,000 neighbors who were unable to travel to the food bank in Maricopa, Pinal, Yavapai, and Coconino counties. More than 2.7 million pounds of food were delivered through the program, making a meaningful impact in combating hunger. Thank you for supporting us as we continue to support our community.



## MOBILE DISTRIBUTION

Food insecurity is more prevalent in rural and remote communities. The Mobile Distribution Team serves as a vital link to reaching these areas, where traditional hunger relief programs are unavailable. Our goal is to expand food access across Arizona by partnering with communities that don't have hunger relief programs. The Mobile Distribution Team travels throughout Arizona to these communities to provide regular food distributions for those in need. During these monthly or bi-monthly mobile markets, we foster strong relationships with local leaders and volunteers to gather support for these distributions. Ultimately, our goal is to empower these communities to take ownership of the distribution efforts and become partners of St. Mary's Food Bank. While we work toward that goal, we provide hands-on training to build sustainability until these community leaders feel ready to operate independently.



# Community Partner & Agency Types



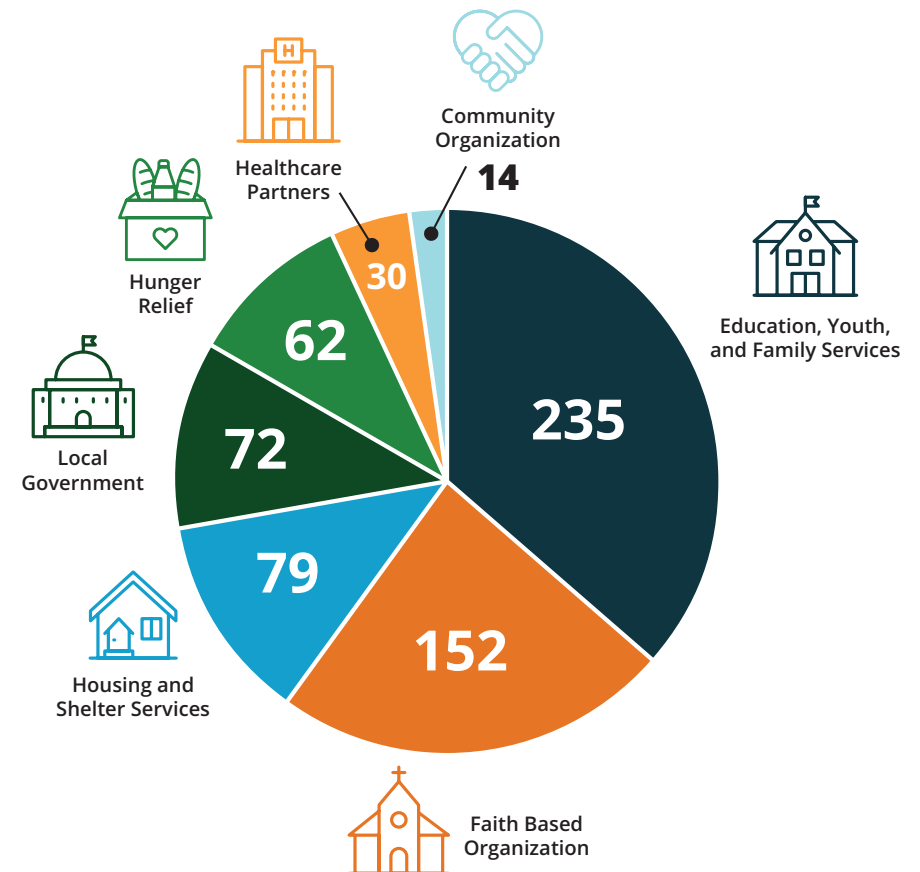
St. Mary's Food Bank proudly collaborates with an extensive network of 700+ partners across Arizona, including food pantries, mobile markets, and meal sites, all united in the mission to "Bridge the Gap" for those in need. Through these robust partnerships, we support hunger relief efforts by providing essential items such as fresh produce, proteins, dairy, bread, pasta, and more.

In FY2024, the combined efforts of our partner network and St. Mary's direct services distributed an impressive 107 million meals, including 47 million pounds of fresh produce, to help nourish our neighbors.



## THE RIPPLE EFFECT OF YOUR SUPPORT OF ST. MARY'S FOOD BANK

St. Mary's Food Bank supports 700+ community partners, across 76,000 square miles, in ten Arizona counties.





# Grateful Neighbors!



“

I love it when we receive cooking ingredients for recipes — chicken stock, carrots, potatoes, and things like that. It helps me prepare something homemade for my family.”

- Madilyn



“

We didn't know about the help available through St. Mary's Food Bank. Ever since we started visiting, it has been a tremendous relief.”

- Michael



“

I come here once a month and am so grateful for the nutritious food. Sometimes, I feel invisible, but the volunteers always welcome me with warm smiles. They never make me feel small or helpless.”

- Linda





# Volunteers

It might surprise you to learn that at St. Mary's Food Bank, we need 300+ volunteers EVERY DAY to help us. With a big mission comes a lot of hard work. Volunteers help sort, box, and distribute food, load carts, assist neighbors and some serve on the Board of Directors.

St. Mary's thanks the companies, organizations, and individuals for their interest and passion for helping others. Over the course of the year, volunteers spent more than 191,000 volunteer hours to ensure that the one in five Arizonans who struggle to make ends meet have access to the food they so desperately needed.



## TOP 5 CORPORATE VOLUNTEER GROUPS



### Amazon

- 449 Volunteers
- 898 Volunteer Hours



### American Express

- 724 Volunteers
- 1,448 Volunteer Hours



### SRP

- 435 Volunteers
- 870 Volunteer Hours



### Rocket Companies

- 404 Volunteers
- 808 Volunteer Hours



### Bank of America

- 393 Volunteers
- 786 Volunteer Hours



# Boards of Directors

FY 2024 - 2025



## 2024-2025 OFFICERS

**DOUGLAS CURRAULT**  
*Chair*  
Freeport-McMoRan Inc.

**GRAEME PARKES**  
*Past Chair*  
WillScot (Retired)

**MIKE DONAHEY**  
*Secretary*  
Snell & Wilmer

**JOE CLANCY, CFA**  
*Treasurer*  
SunChase Holdings, Inc.

**JOANNA ZUCKER**  
*Vice Chair*  
CP Skin Health (Retired)

## MEMBERS

**JACALYN ASKIN**  
Askin Consulting

**WILL FELIZ**  
Duncan Family Farms

**RONA GUYMON**  
Nationwide Financial

**DEVON MCCLELLAND**  
Shamrock Foods

**LISA PHELPS**  
American Homes 4 Rent

**JOHN ROUSSEL**  
Shamrock Foods  
Company, Inc. (Retired)

**CHERYL RUGGIERO**  
Thunderbird Charities

**AMIEL SAWDAYE**  
Arizona Diamondbacks

**SCOTT SIBIGTROT**  
Medline Industries  
(Retired)

**MONICA VILLALOBOS**  
AZ Hispanic Chamber  
of Commerce

**LAURA WORZELLA**  
OneAZ Credit Union

**MILT LIU**  
St. Mary's Food Bank

## EMERITUS BOARD

**BOB BEAKE**  
Shamrock (Retired)

**JOHN DEMETRA**  
Deloitte (Retired)

**MARC ISAACS**  
Sun Orchard (Retired)

**TROY MCNEMAR**  
McNemar Law

**ERIK OLSSON**  
WillScot (Retired)

## ST. MARY'S FOOD BANK FOUNDATION BOARD

**CAROLYN "CJ" JENKINS  
BOWER**  
Rite of Passage, Inc.

**JOE CLANCY, CFA**  
SunChase Holdings, Inc.

**STEPHEN BARNES, CFA®,  
CFP®**  
Barnes Investment  
Advisory Inc.

**MATT HARRISON**  
Golden West,  
A Financial Corp.

**TROY MCNEMAR**  
McNemar Law

**STEVE JASA**  
The Wolff Company

## ST. MARY'S FOOD BANK SENIOR STAFF

**MILT LIU**  
Chief Executive Officer

**ROMAN ARRIOLA**  
Chief Operating Officer

**CHRIS BROWN**  
VP of Technology

**MARCOS GAUCIN**  
Chief Programs Officer

**LISA HICKIE**  
Chief People Officer

**TINA LYONS, CPA**  
Sr. VP of Finance

**LISA NOTARO, CFRE**  
Chief Development Officer

**WALTER (KIP) WARE**  
VP of Data Analytics and  
Food Sourcing

© Copyright 2025 – St. Mary's Food Bank. Some programs received reimbursement funds from Arizona Department of Health Services and Economic Security/Community Services Program. All programs provide services to eligible applicants without regard to race, color, creed, religion, disabled, age, national origin, political beliefs or gender.